

ENVIRONMENTAL PRODUCT DECLARATION

In accordance with ISO 14025 and EN 15804+A1 for:

Unifit 033

From

KNAUFINSULATION



Program:	The International EPD® System www.environdec.com
Programme operator:	EPD International AB
EPD registration number:	S-P-01846
Publication date:	2020-01-30
Validity date:	2025-01-30

Programme-related information and verification

The EPD owner has the sole ownership, liability, and responsibility for the EPD. EPDs of construction products may not be comparable if they do not comply with EN 15804+A1 and if the building context, respectively the product-specific characteristics of performance are not taken into account.

Programme:	The International EPD® System EPD International AB Box 210 60 SE-100 31 Stockholm Sweden www.environdec.com info@environdec.com
EPD registration number:	S-P-01846
Published:	2020-01-30
Valid until:	2025-01-30
EPD owner	Knauf Insulation Sprl Rue de Maestricht 95 4600 Visé Belgium
Product Category Rules:	PCR 2012:01. Construction products and construction services. Version 2.3 Sub-PCR-I Thermal insulation products (EN 16783). Version 2018-11-22
Product group classification:	UN CPC 37
Reference year for reference data:	2016
Geographical application scope:	Europe

CEN standard EN 15804+A1 serves as the Core Product Category Rules (PCR)
Product category rules (PCR): Construction products and Construction services, 2012:01, version 2.3, UN CPC 37. Sub-PCR-I Thermal insulation products (EN 16783), version 2018-11-22,
PCR review was conducted by: The technical Committee of the International EPD® System
Independent third-party verification of the declaration and data, according to ISO 14025:2006: <input checked="" type="checkbox"/> EPD process certification <input type="checkbox"/> EPD verification
Certified by: Bureau Veritas certification Sverige AB SE006629-1
Procedure for follow-up of data during EPD validity involves third party verifier: <input checked="" type="checkbox"/> Yes <input type="checkbox"/> No

General information

Information about the company

Description of the organisation:

Knauf Insulation has more than 40 years of experience in the insulation industry and is one of the most respected names in insulation worldwide. Knauf Insulation is manufacturing products and solutions mainly in glass and rock mineral wool and wood wool. We operate more than 37 manufacturing sites globally in 15 countries and employ more than 5,000 people. The Headquarters are located in Belgium, in Visé.

Product-related or management system-related certifications:

All Knauf Insulation sites, including the related sites for this EPD, are ISO 9001, ISO 14001, ISO 5001 and ISO 45001 certified under the scope "Design. Development and Production of Insulation Materials and Systems".

Name and location of production site:

The application in construction of the concerned product is mainly European. The data utilized for the production stage life cycle assessment are related to production plants located in Krupka (Czech Republic) and Bernburg (Germany).

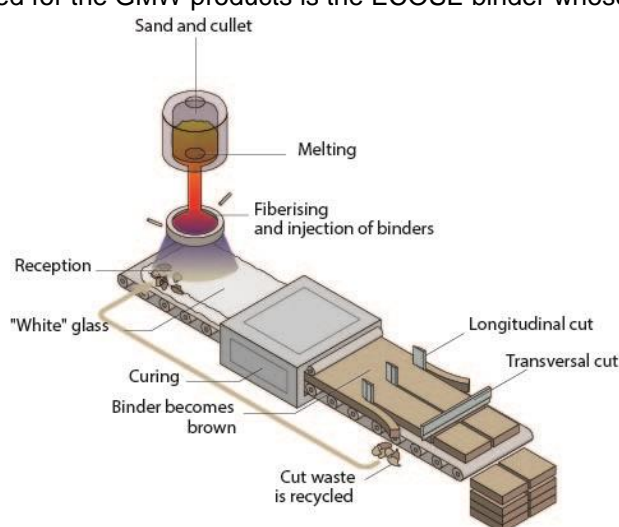
Knauf Insulation, Weststraße 1, 06406 Bernburg (Saale), Germany

Knauf Insulation, Pod dolní drahou 110, 417 42 Krupka, Czech Republic

Information about Glass Mineral Wool production

The Glass Mineral Wool Products for (GMW) are available in the form of slabs, rolls and boards. The density for glass mineral wool ranges from 10 to 85 kg/m³. In general, glass mineral wool consists of at least 92.5% inert material. The inert part is made of recycled glass (external cullet, up to 80% of the composition) and mainly sand and dolomite.

The remaining fraction (less than or equal to 7.5%) is made of bio-based binder components. At Knauf Insulation, the binder used for the GMW products is the ECOSE binder whose origin is plant starch.



Product information

Product name: Unifit 033

Product identification: The declared insulation product is Unifit 033, an unfaced glass mineral wool of one square meter (considered for this EPD). It needs a Declaration of Performance taken into consideration the harmonized product standard EN 13162 and the CE mark.

Product description: The main application for Unifit 033 unfaced rolls are in pitched roofs, partition walls and timber frames.

UN CPC code:

37990: Non-metallic mineral products (including mineral wool, expanded mineral materials, worked mica, articles of mica, non-electrical articles of graphite or other carbon and articles of peat).

Geographical scope:

The product is produced in Krupka (Czech Republic) and Bernburg (Germany) with related country energy mix for electricity. Regarding the market area, the product is mainly marketed in Europe.

Technical Characteristics:

Parameter	Value
Thermal conductivity/ EN 12667	0.033 W/(mK) at 10°C
Water vapor diffusion resistance (EN 12086)	1
Reaction to fire (EN 13501-1)	A1 (EN 1350-1)
Declared density range/ EN 1602	27.2 kg/m³ (+/- 10%)
Melting point of fibers DIN 4102-17	≥ 1000°C

LCA information

Functional unit / declared unit:

The declared unit is one square meter of Glass Mineral Wool unfaced Unifit 033 with a thickness of 150 mm. The declared lambda is 0.033 W/mK at 10°C. The density used for the calculation of this specific LCA is 27.2 kg/m³.

Reference service life: The RSL or durability of Unifit 033 is as long as the lifetime of the building equipment in which it is used (at least 50 years).

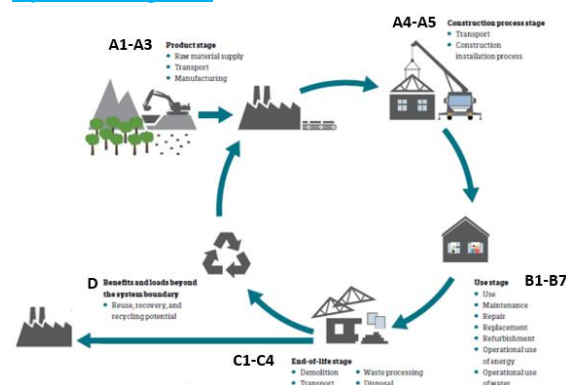
Time representativeness:

Plants production data for the complete year 2016.

Database(s) and LCA software used:

The LCA model, the data aggregation and environmental impacts are calculated with the software GaBi 9.2 and its Service Pack 39 databases.

System diagram:



Description of system boundaries:

The system boundary of the EPD follows the modularity approach defined by the /EN 15804+A1/.

The type of EPD is cradle-to-grave.

List and explanation of the modules declared in the EPD.

The product stage (A1-A3) includes:

- A1 - raw material extraction and processing, processing of secondary material input (e.g. recycling processes),
- A2 - transport to the manufacturer and
- A3 - manufacturing.

This includes provision of all materials, products and energy, packaging processing and its transport, as well as waste processing up to the end-of-waste state or disposal of final residues during the product stage.

The LCA results are given in an aggregated form for the product stage, meaning that the modules A1, A2 and A3 are considered as a unique module A1-A3.

Product Parameters	Value
Declared Density	27.2 kg/m ³
Glass mineral wool weight (without facing weight)	4.05 kg
Surface	1 m ²
Thickness	150 mm
Volume	0.15 m ³
Facing	NA
Packaging Plastic sheet	0.082 kg
Packaging Wooden pallet	0.129 kg
Packaging galvanized steel	NA

The construction process stage includes:

- A4 - transport to the construction site and
- A5 - installation into the building.

The transport to the building site (A4) and installation (A5) included in this LCA use the following parameters:

Parameter	Value
Average transport distance	600 km
Type of fuel and vehicle consumption or type of vehicle used for transport.	Truck. Euro 6. 28 – 32 t / 22 t payload. 33 L for 100 km.
Truck capacity utilization (including 30% of empty returns)	34.7 % of the weight capacity
Loss of materials in site	2%
Packaging Wooden pallet	100% incinerated
Packaging Plastic sheet	40% recycled, 60% incinerated
Packaging galvanized steel	NA

The treatment of the packaging waste after the installation of the product (A5) has been considered.

The Use stage (B1-B7) includes:

- B1: Use
- B2: Maintenance
- B3: Repair
- B4: Replacement
- B5: Refurbishment
- B6: Operational Energy Use
- B7: Operational Water Use

Once installation is complete, no actions or technical operations are required during the use stages until the end of life. Therefore, the mineral wool has no impacts (excluding potential energy savings) on this stage.

The end-of-life stage includes:

- C1 - de-construction, demolition,
- C2 - transport to waste processing,
- C3 - waste processing for reuse, recovery and/or recycling and
- C4 - disposal.

This includes provision of all transports, materials, products and related energy and water use. The common manual dismantling impact of insulation is considered as very small and can be neglected in C1.

Although Glass Mineral Wool products from Knauf Insulation are partly recycled at their end-of-life, an established collection system does not yet exist. Therefore, the assumption chosen in this study, 100% landfill (C4) after the use phase, is the most conservative approach.

Parameter	Value
Disposal type (mineral wool)	100% landfill
Average transport distance waste (C2)	50 km
Type of fuel and vehicle consumption or type of vehicle used for transport.	Truck-trailer, Euro 3, 34 - 40t gross weight / 27t payload capacity/ 40 L for 100 km. (if 100 % utilization).
Truck capacity utilization	50 % of the weight capacity

Module D includes reuse, recovery and/or recycling potentials. According to /EN 15804+A1/, any declared benefits and loads from net flows leaving the product system not allocated as co-products and having passed the

end-of waste state shall be included in module D. Benefits considered in module D originate from packaging recycling or incineration.

Content Declaration

The product does not contain substances on the "Candidate List of Substances of Very High Concern for Authorisation" under the REACH regulation (if above 0.1% of the mass).

Recycled material

The mineral wool waste that is originating from the manufacturing process in the cutting lines is recycled internally and reinjected into the mineral wool production mattress. For 2016 year, cullet external waste are considered into this specific LCA for each plant considered.

Additional information:

All raw materials for the manufacturing of the declared product, the required energy, water consumption and the resulting emissions are considered into the LCA. Consecutively, the recipe components with a share even less than 1% are included. All neglected processes

contribute less than 5% to the total mass or less than 5% to the total energy consumption. For information, the impact of the Glass Mineral Wool plant construction or machines is not taken into account in the life cycle assessment. Allocation criteria with by-products (mineral wool for ceiling tiles) are based on cost.

More information:

www.knaufinsulation.com

www.knaufinsulation.cz

www.knaufinsulation.de

Name and contact information of LCA practitioner:

Yaprak Nayir

Knauf Insulation Sprl

Rue de Maestricht 95

4600 Visé

Belgium

Contact: yaprak.nayir@knaufinsulation.com

Environmental performance

Potential environmental impacts: 1 m² of Glass Mineral Wool Unifit 033 with a thickness of 150 mm.

PARAMETERS	UNIT	TOTAL A1-A3	A4	A5	TOTAL B1-B2-B3- B4-B5-B6- B7	C1	C2	C3	C4	D*
Global warming potential (GWP)	kg CO ₂ eq.	4.81	0.33	0.476	0	0	0.0154	0	0.0658	-0.214
Depletion potential of the stratospheric ozone layer (ODP)	kg CFC 11 eq.	6.13E-012	5.43E-017	1.22E-010	0	0	2.53E-018	0	6.65E-014	-3.19E-014
Acidification potential (AP)	kg SO ₂ eq.	0.0237	0.000265	0.000546	0	0	1.4E-005	0	0.000389	-0.000308
Eutrophication potential (EP)	kg PO ₄ ³⁻ eq.	0.00446	6.01E-005	0.000102	0	0	3.27E-006	0	5.31E-005	-3.67E-005
Formation potential of tropospheric ozone (POCP)	kg C ₂ H ₄ eq.	0.00154	4.46E-005	3.68E-005	0	0	-1.49E-007	0	3.06E-005	-2.97E-005
Abiotic depletion potential – Elements	kg Sb eq.	0.000247	2.54E-008	5.04E-006	0	0	1.18E-009	0	2.36E-008	-4.5E-008
Abiotic depletion potential – Fossil resources	MJ, net calorific value	72.3	4.46	1.74	0	0	0.208	0	0.851	-4.14

*: [Life Cycle D stage covers benefits and loads beyond the system boundary stage (reuse, recovery and recycling potential) therefore, when summing up results, this stage should be considered separately].

Use of resources: 1 m² of Glass Mineral Wool Unifit 033 with a thickness of 150 mm.

PARAMETER		UNIT	TOTAL A1-A3	A4	A5	TOTAL B1-B2-B3- B4-B5-B6- B7	C1	C2	C3	C4	D*
Primary energy resources – Renewable	Use as energy carrier	MJ, net calorific value	11.651	0.26	0.321	0	0	0.0121	0	0.103	-0.581
	Used as raw materials	MJ, net calorific value	7.049	0	0.108	0	0	0	0	0	0
	TOTAL	MJ, net calorific value	18.7	0.26	0.429	0	0	0.0121	0	0.103	-0.581
Primary energy resources – Non- renewable	Use as energy carrier	MJ, net calorific value	80.689	4.47	2.01	0	0	0.208	0	0.882	-4.67
	Used as raw materials	MJ, net calorific value	3.011	0	0	0	0	0	0	0	0
	TOTAL	MJ, net calorific value	83.3	4.47	2.01	0	0	0.208	0	0.882	-4.67
Secondary material		kg	2.86	0	0.0584	0	0	0	0	0	0
Renewable secondary fuels		MJ, net calorific value	1.86E-023	0	3.81E-025	0	0	0	0	0	-8.63E-025
Non-renewable secondary fuels		MJ, net calorific value	2.19E-022	0	4.47E-024	0	0	0	0	0	-1.01E-023
Net use of fresh water		m ³	0.0301	0.000439	0.00149	0	0	1.65E-005	0	2.04E-005	-0.000775

Waste production and output flows: 1 m² of Glass Mineral Wool Unifit 033 with a thickness of 150 mm.

Waste production

PARAMETER	UNIT	TOTAL A1-A3	A4	A5	TOTAL B1-B2-B3-B4- B5-B6-B7	C1	C2	C3	C4	D*
Hazardous waste disposed	kg	1.55E-007	2.5E-007	8.66E-009	0	0	1.16E-008	0	1.39E-008	-1.7E-009
Non-hazardous waste disposed	kg	0.194	0.000364	0.0901	0	0	1.69E-005	0	4.09	-0.0014
Radioactive waste disposed	kg	0.00429	6.07E-006	0.000105	0	0	2.83E-007	0	1.2E-005	-0.000208

*: [Life Cycle D stage covers benefits and loads beyond the system boundary stage (reuse, recovery and recycling potential) therefore, when summing up results, this stage should be considered separately].

Output flows

PARAMETER	UNIT	TOTAL A1-A3	A4	A5	TOTAL B1-B2-B3-B4- B5-B6-B7	C1	C2	C3	C4	D*
Components for reuse	kg	0	0	0	0	0	0	0	0	0
Material for recycling	kg	0	0	0	0	0	0	0	0	0
Materials for energy recovery	kg	0	0	0.16	0	0	0	0	0	0
Exported energy, electricity	MJ	0	0	0.536	0	0	0	0	0	0
Exported energy, thermal	MJ	0	0	1.31	0	0	0	0	0	0

*: [Life Cycle D stage covers benefits and loads beyond the system boundary stage (reuse, recovery and recycling potential) therefore, when summing up results, this stage should be considered separately]

LCA interpretation

ENVIRONMENTAL IMPACTS

All impact categories except the ADPE and the ODP are dominated by the production. This is mainly due to the consumption of energy (electricity and natural gas) during the production of glass mineral wool.

The Global Warming Potential (GWP) is clearly dominated by the production, mostly due to energy consumption (electricity and natural gas).

The Ozone layer Depletion Potential (ODP) seems highly influenced highly by the installation step, mostly due to plastics packaging incineration scenario resulting in emissions of halogenated compounds.

The Acidification Potential (AP) is also dominated by the production due to the processes emissions and the electricity consumption. Most of impact is by emissions of sulphur dioxide, ammonia and nitrogen oxides.

The Eutrophication Potential (EP) is significantly influenced by production due to emissions from curing oven, furnace and other unit processes. The glucose for the binder production also has an impact because of crops fertilizers use.

The Photochemical Ozone Creation Potential (POCP) is dominated by the production due to emissions in the curing oven and in other unit processes but also energy consumption.

The Abiotic Depletion Potential Element (ADPe) is dominated by the raw materials production.

The Abiotic Depletion Potential Fossil (ADPf) is dominated by natural gas use and the electricity consumption for the production. The packaging and the binder have also a non-negligible impact. The installation stage has a "positive" contribution thanks to energy recovery from incineration of a percentage of plastic packaging and the avoidance production of new plastic production thanks to a percentage of recycling plastic packaging.

RESOURCES USE

Total Use of Non-Renewable Primary Energy Resources (PENRT) is dominated by the production of glass mineral wool products (especially due to the energy consumption) and with the little influence of raw materials, binder and packaging.

Total Use of Renewable Primary Energy Resources (PERT) is dominated by the binder (bio-based), the production, (electricity mix) and the packaging (wooden pallets).

For the **Use of Secondary Material (SM)**, there is a lot of external cullet used into the batch process (recycled glass from windows and bottles) up to 80% depending on plants.

References

International EPD® System

General Programme Instructions of the International EPD® System. Version 2.5.

Product Category Rules PCR 2012:01. Construction products and construction services. Version 2.3

Sub-PCR-I Thermal insulation products (EN 16783). Version 2018-11-22

ISO 14025

DIN EN ISO 14025:2011-10: Environmental labels and declarations — Type III environmental declarations — Principles and procedures

EN 15804

EN 15804:2012-04+A1 2013: Sustainability of construction works — Environmental Product Declarations — Core rules for the product category of construction products

GaBi 9.2

GaBi 9.2: Software and database for life cycle engineering. LBP, University of Stuttgart and PE INTERNATIONAL AG, 2018.

EN 1602:

EN1602: 2013 Thermal insulation products for building applications – Determination of the apparent density

EN 12667

EN 12667: 2001 Thermal performance of building materials and products - Determination of thermal resistance by means of guarded hot plate and heat flow meter methods - Products of high and medium thermal resistance

EN 13162

EN 13162:2012 Thermal insulation products for buildings - Factory made mineral wool (MW) products - Specification

EN 13501-1

EN 13501-1: 2009 Fire classification of construction products and building elements - Part 1: Classification using test data from reaction to fire tests.

DIN 4102 / T17

DIN 4102 / T17: 1990 Fire behaviour of building materials and elements; determination of melting point of mineral fibre insulating materials; concepts, requirements and testing.

EN 12086

EN 12086: 2013 Thermal insulating products for building applications –determination of water vapour transmission properties.

Contact information:

EPD owner:	 <p>Knauf Insulation Rue de Maestricht 95 4600 Visé Belgium www.knaufinsulation.com Contact: yaprak.nayir@knaufinsulation.com</p>
LCA support:	 <p>Université de Liège – Laboratory of Chemical Engineering PEPs - Products, Environment and Processes Allée du 6 août 15, Bat B6 4000 Liège Belgium</p>  <p>Thinkstep Hauptstraße 111-113 70771 Leinfelden-Echterdingen Germany</p>
Programme operator:	 <p>EPD International AB info@environdec.com</p>