



Environmental Product Declaration for **Arianna[®] Slab Track System**

EPD registration number: S-P-04332

Date of publication: 2021/08/09

Date of validity: 2026/08/04

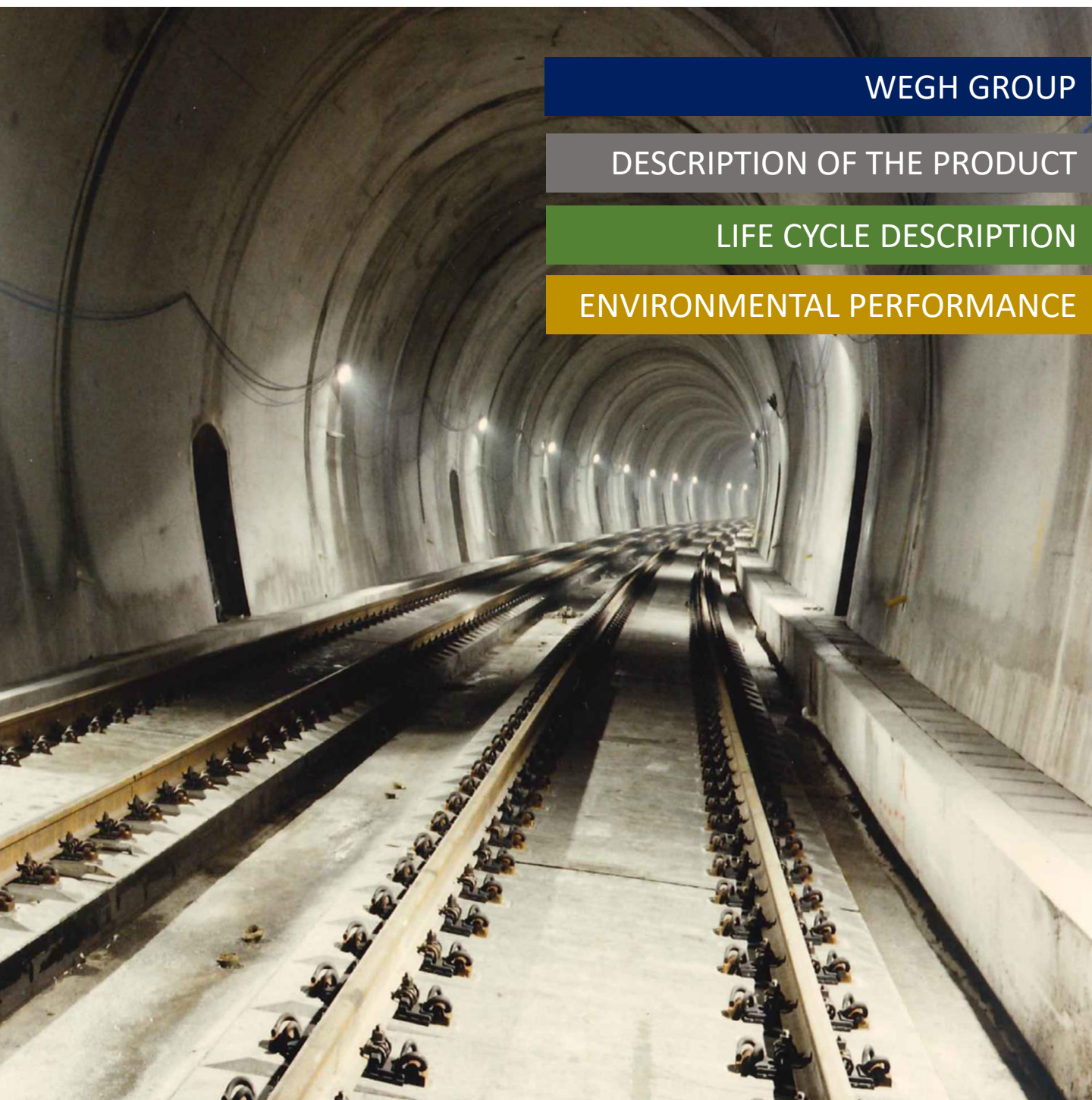
INDEX

WEGH GROUP

DESCRIPTION OF THE PRODUCT

LIFE CYCLE DESCRIPTION

ENVIRONMENTAL PERFORMANCE



ABOUT US

WEGH Group is a leader in the design and construction of solutions for the railway industry, with more than **530 customers** in over **40 Countries**.

With 4 production plants and different foreign branches, **WEGH Group** is firmly established in the reference markets and able to meet the international market requirement.

Its significant product skills, acquired in over sixty years of experience, synergistically combine to create a fundamental and comprehensive treasure of know-how that is placed at the service of the railway sector and make **WEGH Group** a reliable partner, considered a reference supplier by the most important contractors and sub contractors.



MISSION

Mastering complexity and making it simple for our clients.

Sharing aims, goals and all the options to reach them.

Focusing on excellence and going with our customers step by step.

Because their way is our way.

HISTORY

The history of WEGH Group dates to 1958 with the founding of "Niccoli e Naldoni", a well-established company in the railway sector, specializing in the production of components for signalling systems and for railway superstructure.

As time progressed, other companies, all operating in the railway sector, joined the group, each bringing its own specific know-how.

PHILOSOPHY

COMPETENCE

Thanks to 60 years of experience in the railway sector, synergistically integrated product lines covering different needs, and a young qualified team that is constantly looking for innovative solutions.

TRANSPARENCY

We push customers to make aware choices.

EXCELLENCE

Thanks to an all-round service covering all possible needs: not only design, production, laying and maintenance, but also support and assistance in case customers undertake projects autonomously.





DESCRIPTION OF THE PRODUCT

Wegh Group S.p.A. produce precast elements (sleepers, slabs and turnout bearer in its plan located in Bergamo (Italy).

ARIANNA[®] STS consist in a sequence of slabs, with cross-section and length which vary according to the gauge and rolling stock. For railways the typical cross-section is 2,40 x 0,18 m and the total length is 4,80m.

1- RAILS

Common rail used for high speed line (60 E1). Arianna[®] is designed to integrate all others track equipment such as switch and crossing with using the same rail profile

2- SLAB

Concrete slab is made with C45/55 prestressed reinforced concrete

3- INTERMEDIATE LAYER

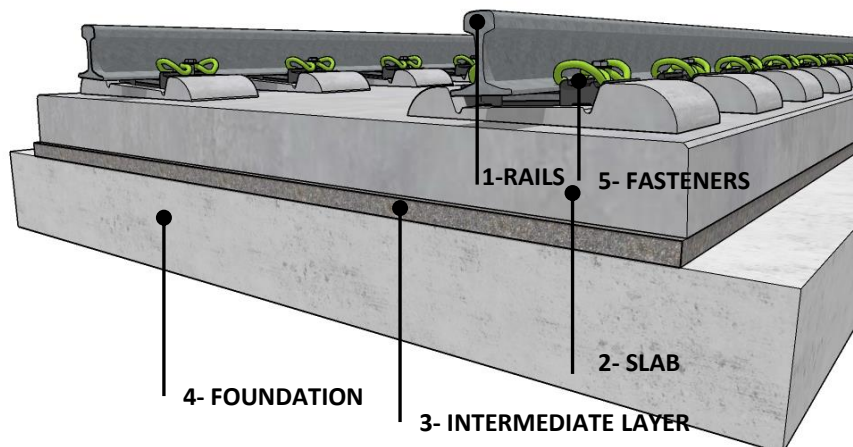
This layer is designed by WEGH GROUP to ensure high mechanical performance and high resistance to environmental actions.

4- FOUNDATION

Sub-structure lying on the track platform and made of C30/37 concrete

5- FASTENERS

Arianna[®] is designed to integrate all the fastening system approved by the customer





DESCRIPTION OF THE PRODUCT

ARIANNA[®] STS is the ballastless solution designed specifically for railway lines and is particularly suitable for:

- passenger lines
- high-speed lines
- tunnel, viaduct and embankment
- reducing maintenance costs.

ARIANNA[®] STS does not require the maintenance operations usually associated with conventional line such as ballast tamping, levelling, cleaning and renewal.

KEY BENEFITS



Low life cycle cost due to it being very low-maintenance



Quick and guaranteed production times



Quick laying and maintenance time



Constant quality control of the manufactured elements



Suitable for installation when available space is reduced because it reduces the overall size and weight of the track system



High stability of track geometry over time



Transitable for road vehicles and pedestrians

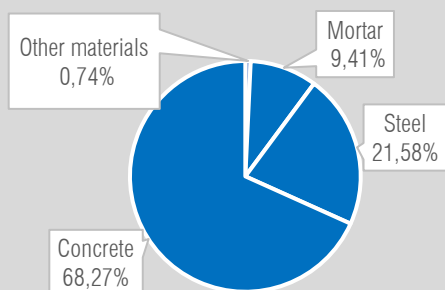
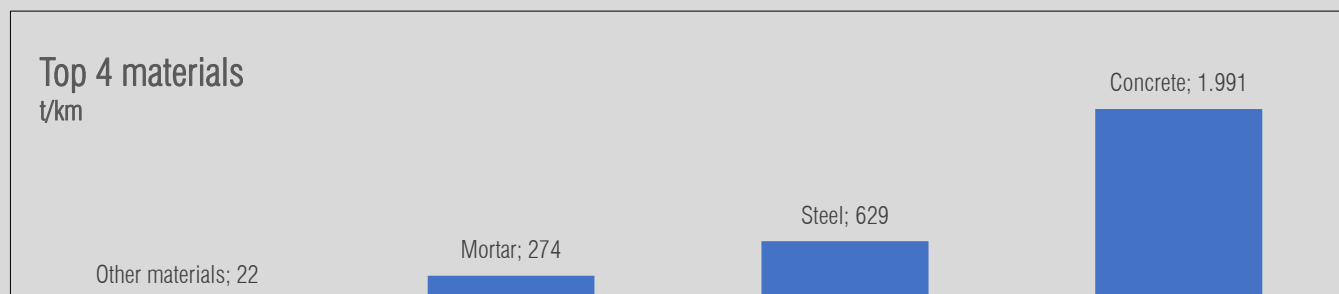




LIFE CYCLE DESCRIPTION

Bill of materials

Materials used for the construction of the Arianna[®] STS infrastructure as well as for maintenance and reinvestments have been inventoried. Total weight associated to the solution is 2.915 t/km. Top four materials and corresponding quantities per km of single track are:



Hazardous substances

No substance meeting the criteria of REACH regulation (Registration, Evaluation, Authorisation and Restriction of Chemicals) have been identified in the solution.

Maintenance

Each maintenance activities are considered in this LCA:

- Use of engine and vehicles for inspection site
- Replacement of parts including raw materials, production, transport and installation





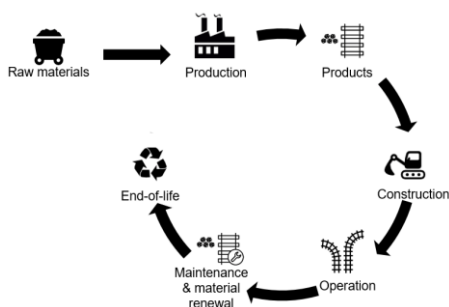
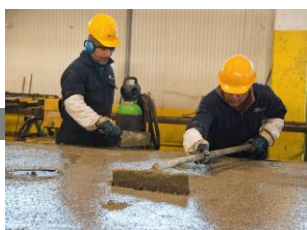
LIFE CYCLE DESCRIPTION

Environmental impacts of the Arianna® STS has been characterized through the realization of a LCA in accordance with ISO 14040: 2006.

SimaPro software and associated EcolInvent databases are used to perform this life cycle impact assessment.

The function of the Arianna® STS is to provide rolling support and guide trains at the required speed on railways main-lines.

The **Declared Unit** is for **1 km** of Arianna® STS single track, over **90 years** of infrastructure service life. Only full Arianna® STS track without transition zone nor tunnel or viaduct sections is considered in this LCA. Reference Service LIFE – RLS – are the same of the useful life of the asset (90 years).



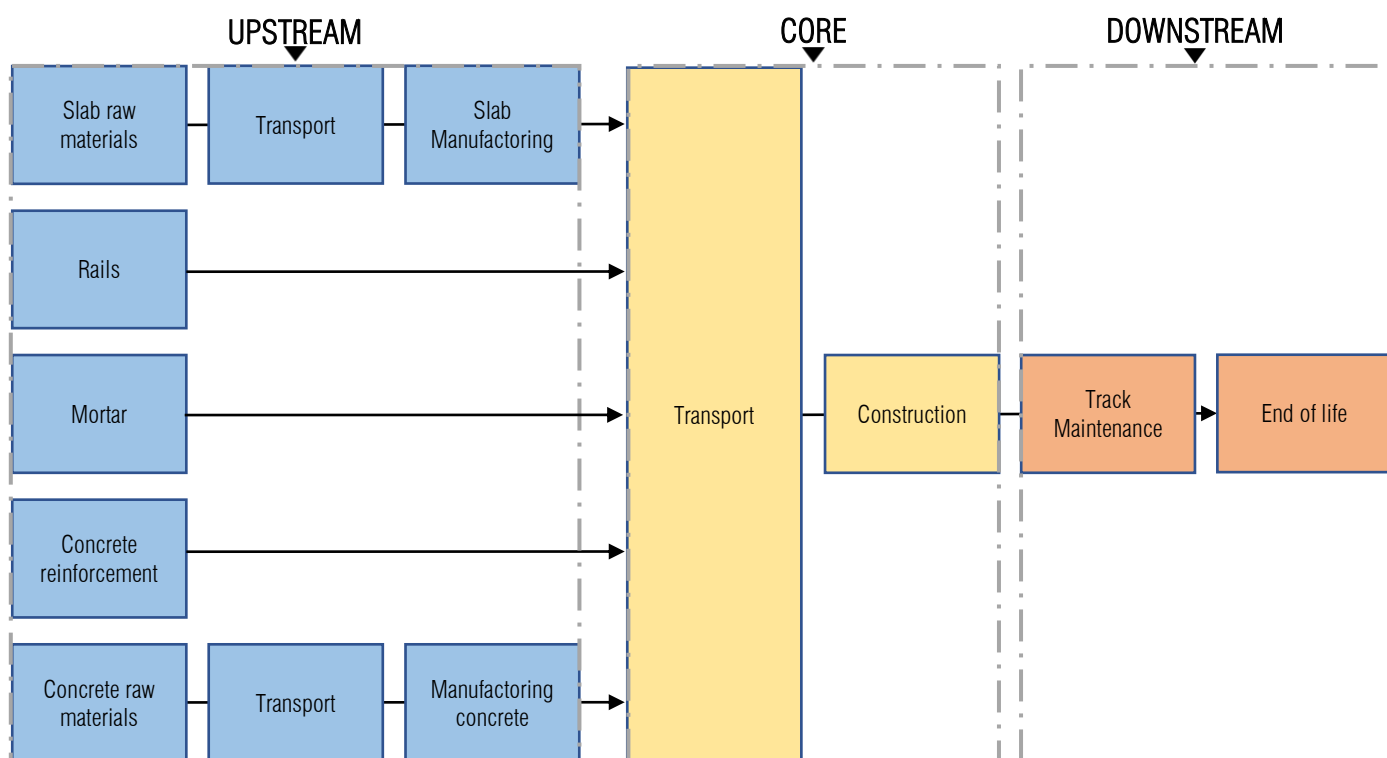


LIFE CYCLE DESCRIPTION

The whole life cycle of the solution is considered, in other words, the LCA is a “cradle to grave” LCA that take into account all life cycle phases form the extraction of raw materials which compose Arianna[®] STS to the end-of-life waste management.

Transports along the supply chain and to the construction site are included as well as all construction activities (tools, electricity, vehicles and consumable).

Maintenance activities mainly consist of inspections, repair and replacement of equipment as well as periodical grinding of the track. Finally, deconstruction, collection and treatment end of life materials have been considered.

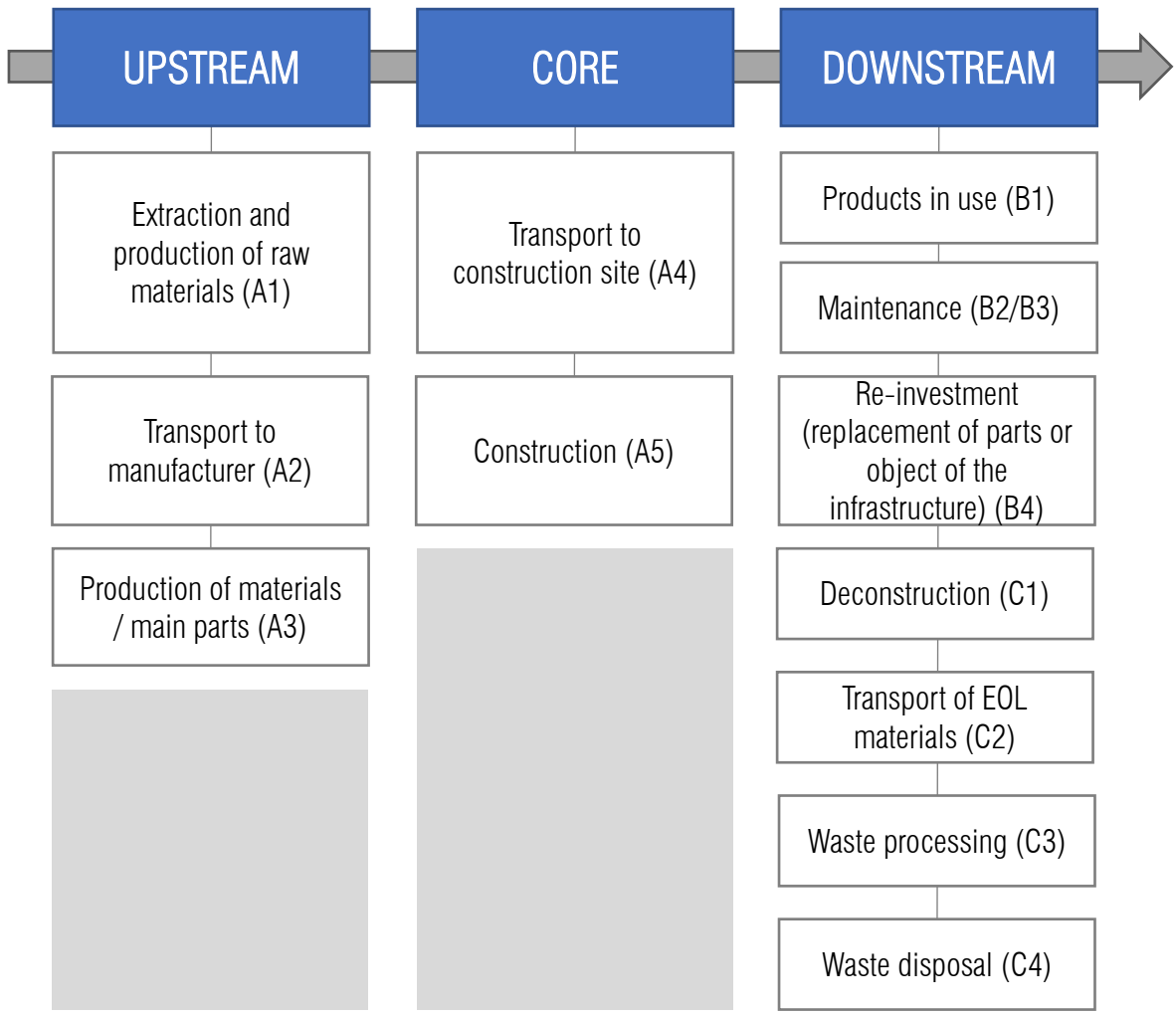




LIFE CYCLE DESCRIPTION

EPD

EN 15804 PHASES





ENVIRONMENTAL PERFORMANCE

GLOBAL WARMING POTENTIAL (kg CO₂ equivalent)

calculates the contribution to global warming of the planet by the emission of greenhouse gases

ACIDIFICATION (kg SO₂ equivalent)

refers to the atmospheric acidification caused by the emission of gas with an acidifying effect

EUTROPHICATION (kg PO₄ 3- equivalent)

includes all impacts due to excessive levels of macro-nutrients in the environment caused by emissions of nutrients to air, water and soil

PHOTOCHEMICAL OXIDATION (kg NMVOC)

refers to the photochemical ozone formation caused by photochemical oxidation of volatile organic compounds (VOC) and carbon monoxide

ABIOTIC DEPLETION – FOSSIL FUELS (MJ)

calculates the depletion of natural fossil resources

ABIOTIC DEPLETION – ELEMENTS (Sb equivalent)

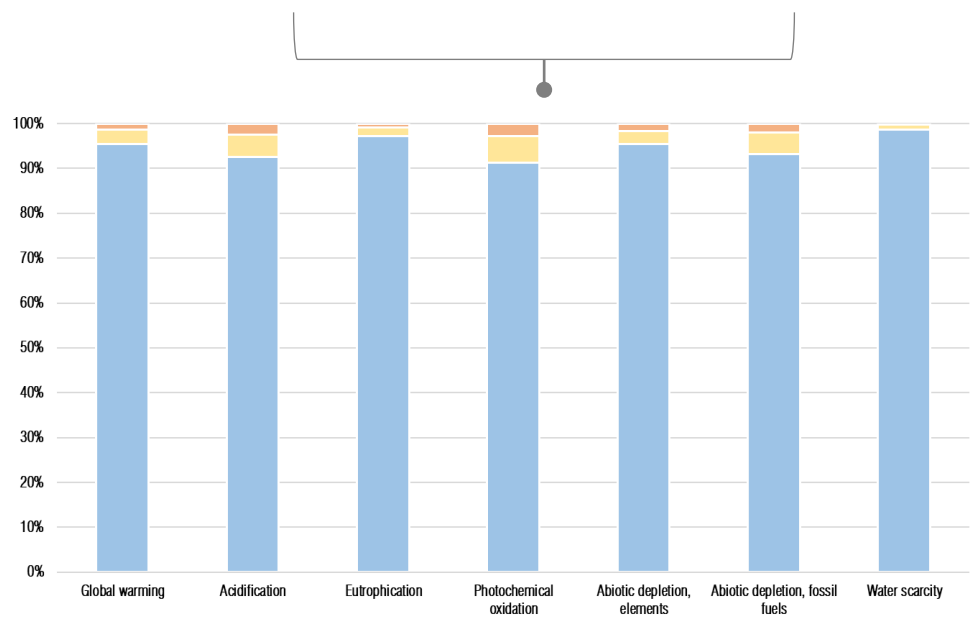
refers to the depletion of non – fossil resources





ENVIRONMENTAL PERFORMANCE

INDICATOR PER DECLARED UNIT	UNIT	UPSTREAM	CORE	DOWNSTREAM	TOTAL
Global warming	kg CO2 eq	1,78E+06	6,11E+04	2,42E+04	1,87E+06
Acidification	kg SO2 eq	6,70E+03	3,56E+02	1,76E+02	7,23E+03
Eutrophication	kg PO4 ³⁻ eq	3,56E+03	7,31E+01	2,98E+01	3,66E+03
Photochemical oxidation	kg NMVOC	6,97E+03	4,55E+02	2,11E+02	7,64E+03
Abiotic depletion, elements	kg Sb eq	2,31E+01	7,15E-01	3,95E-01	2,42E+01
Abiotic depletion, fossil fuels	MJ	1,71E+07	8,76E+05	3,55E+05	1,83E+07
Water scarcity	m3 eq	5,86E+05	6,35E+03	1,28E+03	5,94E+05



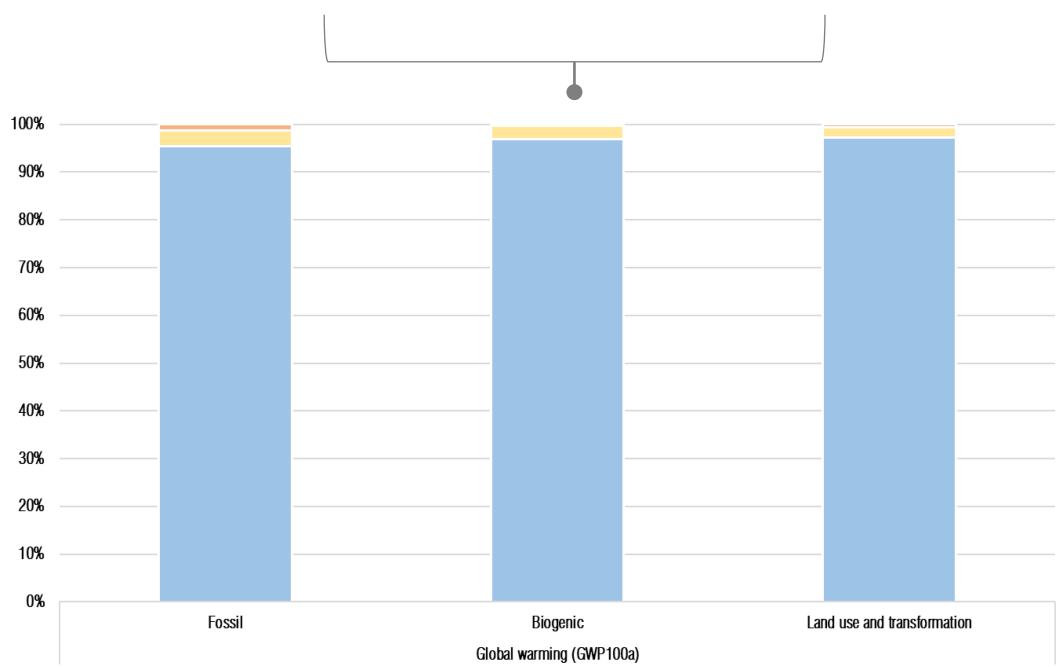
Contribution of each phase to the environmental impacts





ENVIRONMENTAL PERFORMANCE

INDICATOR PER DECLARED UNIT		UNIT	UPSTREAM	CORE	DOWNSTREAM	TOTAL
Global warming (GWP100a)	Fossil	kg CO2 eq	1,74E+06	6,00E+04	2,40E+04	1,82E+06
	Biogenic	kg CO2 eq	4,10E+04	1,15E+03	1,23E+02	4,23E+04
	Land use and transformation	kg CO2 eq	9,52E+02	2,02E+01	6,42E+00	9,79E+02
	TOTAL	kg CO2 eq	1,78E+06	6,11E+04	2,42E+04	1,87E+06



Contribution of each phase to the
Global warming impact



Product category rules (PCR):
Railways, PCR 2013:19, version 2.01

PCR review was conducted by:

The Technical Committee of the International EPD[®] System. A full list of members available on www.environdec.com/TC. The PCR review panel may be contacted via info@environdec.com.

Members of the Technical Committee were requested to state any potential conflict of interest with the PCR moderator or PCR committee, and were excused from the review.

Independent verification of the declaration and data, according to ISO 14025:2006

☐ EPD Process Certification (internal) ☒ EPD Verification (external)

Third party verifier:
DNV Business Assurance Italia
<https://www.dnv.it/assurance>

Accredited by:
ACCREDIA
<https://www.accredia.it>

Programme:
The International EPD[®] System
EPD International AB
Box 210 60
SE-100 31 Stockholm
Sweden
www.environdec.com

EPD owner:
WEGH GROUP SpA (*)
Via G. di Vittorio
43045
Fornovo di Taro (PR)
Italy
www.weghgroup.com

EPD registration number:
S-P-04332

LCA author:
Prof. Giuseppe Vignali
giuseppe.vignali@unipr.it
LCA: LCA analysis performed by UniPR (June 2021)

Published:
2021/08/09

Programme operator:
EPD International AB
info@environdec.com

Valid until:
2026/08/04

References:

- LCA analysis (rev. June 2021)
- PCR 2013:19 Railways. Version 2.11
- General Programme Instructions of the International EPD[®] System, version 3.0, based on ISO 14025 and ISO 14040/14044
- EN 15804:2012 + A1:2013 Sustainability of construction works - Environmental product declarations - Core rules for the product category of construction products

Revision date:

Product Category Rules:
PCR 2013:19 Railways. Version 2.11

Product group classification:
UN CPC 53212

Reference year for data:
2018

Geographical scope:
Global

(*) Wegh Group SpA has the sole ownership, liability and responsibility of the EPD

Configurations

- Life cycle description information and environmental performance results published in this EPD corresponds to the reference design configuration developed by WEGH GROUP.
- To know the performance associated to other possible configurations of the solution please contact WEGH Group.





HEADQUARTER

Parma

Via G. di Vittorio, 87
43045 Fornovo di Taro (PR) Italy
Ph: +39 0525 300111

Bergamo

Via Cherio, s.n.
24050 calcinate (BG) Italy

La Spezia

Via Ameglia, 78
19030 Romito Magra (SP) Italy

Prato

Via del Lazzaretto, 113
59100 Prato Italy

